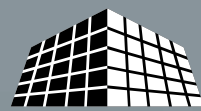


ADVANCED EXTERIOR SYSTEMS

AES offers:

- Panelized Wall Systems
- Light-Gauge Metal Trusses
- MCM Panel Systems
- Architectural Cladding Systems
- Rain-Screen Wall Systems

MCM Panel Systems



ADVANCED EXTERIOR SYSTEMS
Aluminum Composite Panel System

3640 Banks Road, Raleigh, North Carolina 27603

919.772.3313 Phone | 919.772.5897 Fax

www.advancedexteriorsystems.com



Duke Radiation, Durham, NC

The MCM Panel Systems designed and built by Advanced Exterior Systems will give your next project the clean, innovative and dramatic appearance you are looking for. These products will also provide years of maintenance free performance for any type of structure. Our panel systems are fully tested per ASTM requirements including air and water infiltration, structural and seismic criteria.



N.C. State Football Facility- The Wendell Murphy Football Center Raleigh, NC

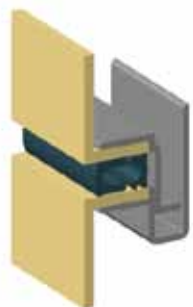
MISSION STATEMENT:

Every member of our team is committed to long term relationships with our clients, based on safety, meeting expectations and quality. Our commitment to this mission provides an environment that encourages new ideas, focused teams, and continuous improvement.



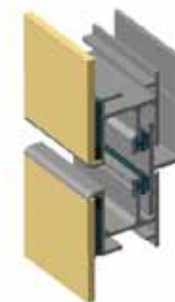
DSS1000 ROUT-RETURN WET SEAL SYSTEM

Our DSS1000 system provides a caulked panel that is free to expand and contract thermally while maintaining architectural flatness. The term "wet seal" indicates that the panel joints are kept weather tight by exposed sealant.



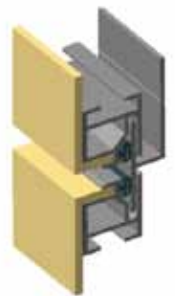
DSS2000 ROUT-RETURN GASKET SYSTEM

Our DSS2000 system provides a hard silicone gasket sealed panel that is free to expand and contract thermally and offers contrasting architectural lines.



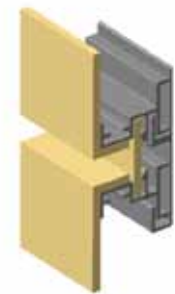
DSS3000 CEG DRY SEAL SYSTEM

Our DSS3000 system is a continuous edge grip system, which is a modification of the rout-return dry seal system. It does not require the 1" return tab to hold our attachment extrusions. The benefits are the full use of the sheet width, increasing panel coverage by 2".



DSS4000 ROUT-RETURN DRY SEAL SYSTEM

Our DSS4000 system has aluminum attachment extrusions, coupled with rubber gaskets on 1" return tabs, which creates a true weather tight sealed system. By using interior gasket seals, this system presents a rout and return look with clean and open contrasting lines.



DSS5000 ROUT-RETURN RAIN SCREEN SYSTEM

Our DSS5000 system is a highly engineered Aluminum composite panel rain screen system, which does not require exposed sealant. The reveals offer flexibility of joint sizes from 1/2" to several inches in the same color as the panels. Applied to sheathing wrapped with an ice and water barrier, our DSS5000 system provides the highest level of aesthetics and performance in the industry.



ECSU School of Pharmacy Elizabeth City, NC



Virginia Living Museum Newport, VA



IBM Headquarters Research Triangle Park, NC



Mint Museum Shop Charlotte, NC



MCAS New River Exchange- Cherry Point, NC



Washington Dulles International Airport (IAD) Chantilly, VA

These tests are performed for all of our MCM systems:

- ASTM E 283-99 – Air Infiltration
- ASTM E 331-00 – Static Pressure Water Resistance
- AAMA 501.1-94 – Dynamic Pressure Water Resistance
- ASTM E 330-97 – Structural Performance



advancedexteriorsystems.com

919.772.3313